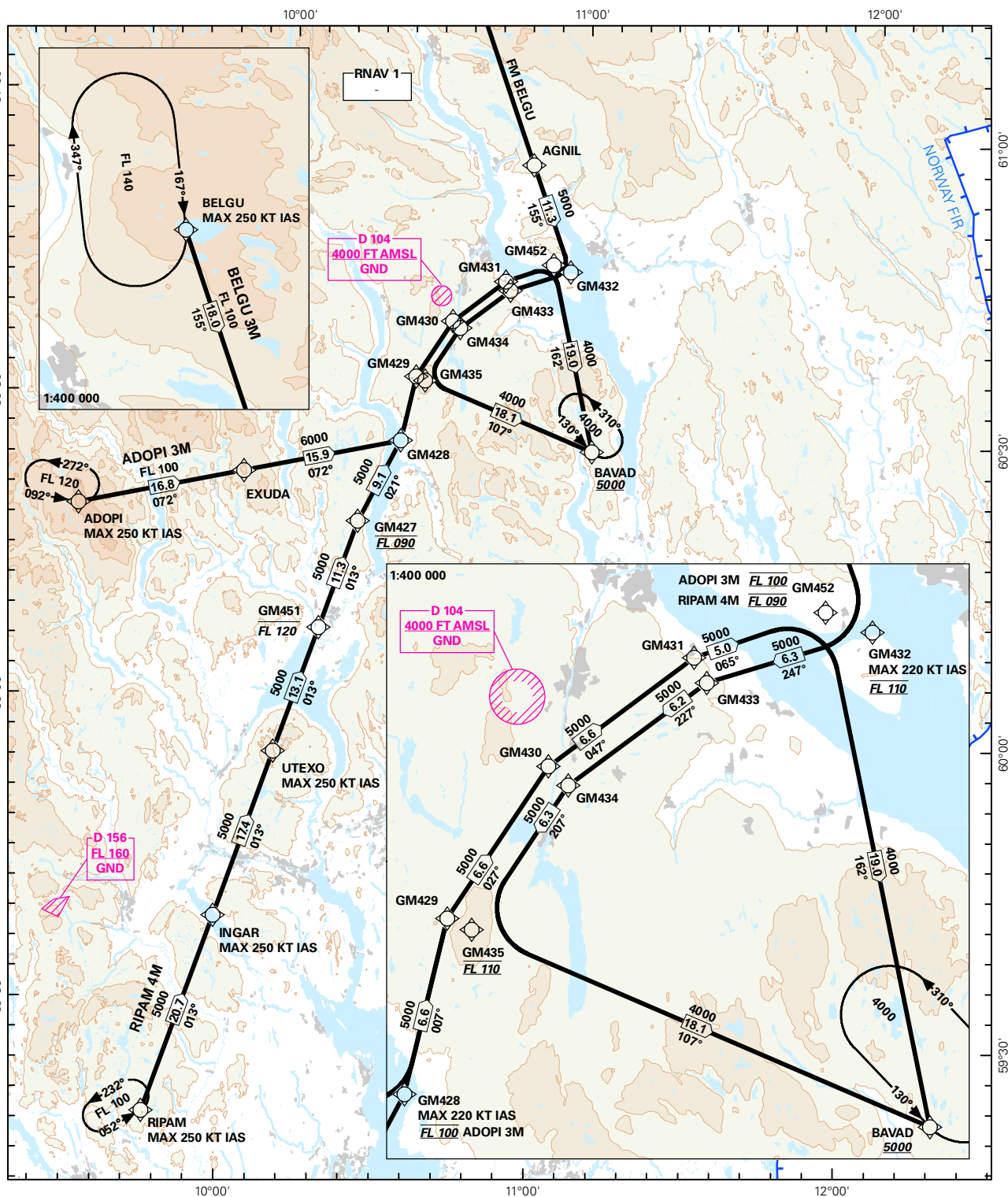
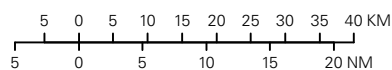


## STANDARD ARRIVAL CHART INSTRUMENT (RNAV 1 STAR BASED ON GNSS OR DME/DME)

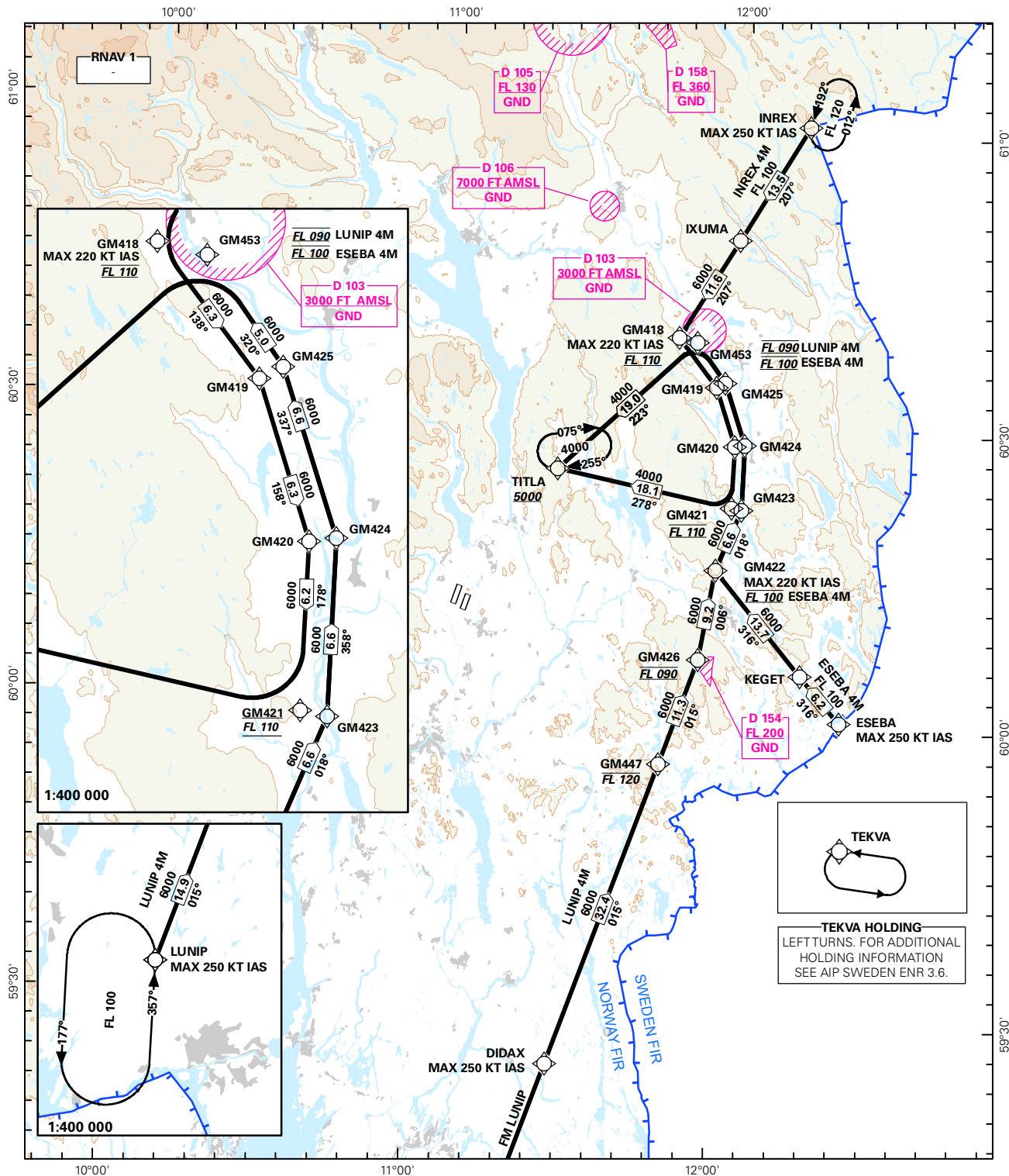
<div><div></div><div>3<sub>9</sub></div></div> <div>MSA 25 NM ARP</div>	ATIS: 126.125	ALT AND ELEV ARE IN FT DIST IN NM			OSLO/GARDERMOEN  RWY 19L/R W  NORWAY  ADOPI 3M, BELGU 3M, RIPAM 4M
	APP: 120.450				
	DIR: 136.400				
	FIN: 128.900				
	TWR: 118.300 120.100	1:1 100 000	VAR: 2.8 ° E (2015)	TA 7000	

CHANGES: ADOPI 3M, BELGU 3M, RIPAM 4M, MAGNETIC VARIATION.

STAR DESCRIPTION OVERLEAF  
DESCRIPTION OF WAYPOINTS, REF ENR 4.4ATS AIRSPACE CLASSIFICATIONS: REF ENR 1.4  
LEGEND: REF GEN 2.3

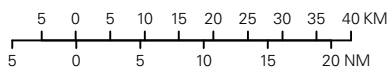
## STANDARD ARRIVAL CHART INSTRUMENT (RNAV 1 STAR BASED ON GNSS OR DME/DME)

<div><div></div><div>3<sub>9</sub></div></div> <div>MSA 25 NM ARP</div>	ATIS: 126.125		ALT AND ELEV ARE IN FT DIST IN NM			OSLO/GARDERMOEN  RWY 19 L/R E  NORWAY	
	APP: 118.475						
	DIR: 136.400						
	FIN: 128.900						
	TWR: 118.300 120.100		1:1 100 000	VAR: 2.8 ° E (2015)	TA 7000		



STAR DESCRIPTION OVERLEAF  
DESCRIPTION OF WAYPOINTS, REF ENR 4.4

ATS AIRSPACE CLASSIFICATIONS: REF ENR 1.4  
LEGEND: REF GEN 2.3



**STANDARD ARRIVAL ROUTES - INSTRUMENT**  
**(RNAV 1 STAR based on GNSS or DME/DME)**
**OSLO/Gardermoen**  
**RWY 19L/R**

**GENERAL:** Class A GNSS shall not be used.  
Radar service shall be available.  
Maximum speed 250 KT IAS unless otherwise stated under RESTRICTIONS, or instructed by ATC.

**CONTINGENCY PROC:** Loss of RNAV capability: Request vectoring.

**VECTORIZING:** Vectoring may be used when necessary.

**RADIO COMMUNICATION FAILURE:** Squawk A7600.  
Follow cleared or expected STAR until IAF, then start approach to assigned runway without delay. If no specific runway for landing has been assigned, start approach to runway 19R without delay.

DESIGNATOR	ROUTE	RESTRICTIONS	DESCEND	CLEARANCE LIMIT
<b>ADOPI 3M</b> (ADOPI THREE MIKE ARRIVAL)	From ADOPI to EXUDA, to GM428, to GM429, to GM430, to GM431, to GM452, turn right to BAVAD	Cross ADOPI at 250 KT IAS or less. Cross GM428 at FL100, speed 220 KT IAS or less. Cross GM452 at FL100. Cross BAVAD at 5000 FT or above.	As cleared by ATC	BAVAD HLDG
<b>BELGU 3M</b> (BELGU THREE MIKE ARRIVAL)	From BELGU to AGNIL, to GM432, turn right to GM433, to GM434, to GM435, turn left to BAVAD	Cross BELGU at 250 KT IAS or less. Cross GM432 at FL110, speed 220 KT IAS or less. Cross GM435 at FL110. Cross BAVAD at 5000 FT or above.	As cleared by ATC	BAVAD HLDG
<b>ESEBA 4M</b> (ESEBA FOUR MIKE ARRIVAL)	From ESEBA to KEGET, to GM422, to GM423, to GM424, to GM425, to GM453, turn left to TITLA	Cross ESEBA at 250 KT IAS or less. Cross GM422 at FL100, speed 220 KT IAS or less. Cross GM453 at FL100. Cross TITLA at 5000 FT or above.	As cleared by ATC	TITLA HLDG
<b>INREX 4M</b> (INREX FOUR MIKE ARRIVAL)	From INREX to IXUMA, to GM418, to GM419, to GM420, to GM421, turn right to TITLA	Cross INREX at 250 KT IAS or less. Cross GM418 at FL110, speed 220 KT IAS or less. Cross GM421 at FL110. Cross TITLA at 5000 FT or above.	As cleared by ATC	TITLA HLDG
<b>LUNIP 4M</b> (LUNIP FOUR MIKE ARRIVAL)	From LUNIP to DIDAX, to GM447, to GM426, to GM422, to GM423, to GM424, to GM425, to GM453, turn left to TITLA	Cross LUNIP at 250 KT IAS or less. Cross DIDAX at 250 KT IAS or less. Cross GM447 at or below FL120. Cross GM426 at FL090. Cross GM422 at 220 KT IAS or less. Cross GM453 at FL090. Cross TITLA at 5000 FT or above.	As cleared by ATC	TITLA HLDG
<b>RIPAM 4M</b> (RIPAM FOUR MIKE ARRIVAL)	From RIPAM to INGAR, to UTEXO, to GM451, to GM427, to GM428, to GM429, to GM430, to GM431, to GM452, turn right to BAVAD	Cross RIPAM at 250 KT IAS or less. Cross INGAR at 250 KT IAS or less. Cross UTEXO at 250 KT IAS or less. Cross GM451 at or below FL120. Cross GM427 at FL090. Cross GM428 at 220 KT IAS or less. Cross GM452 at FL090. Cross BAVAD at 5000 FT or above.	As cleared by ATC	BAVAD HLDG

THIS PAGE INTENTIONALLY LEFT BLANK